
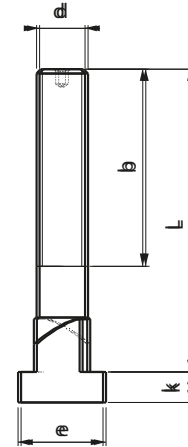


Referenz-Nr. Order No.	dx	xL	lb	a	e	lk	SspanVerteri Tightening Data		
							Nm	kN	
1650-1214050		x50	35						70
1650-1214080	M12x14	x80	55	13.7	22	8	141	74	100
1650-1214125		x125	75						120
1650-1618063		x63	45						160
1650-1618100	M16x18	x100	65	17.7	28	10	354	138	220
1650-1618160		x160	100						280
1650-2022080		x80	55						330
1650-2022125	M20x22	x125	85	21.7	35	14	679	215	430
1650-2022200		x200	120						570
1650-2428100		x100	70						650
1650-2428125	M24x28	x125	85	27.7	44	18	1163	310	770
1650-2428250		x250	150						1150

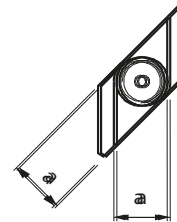


1650

- Eigenschaft: Bei Platten mit Nut von oben stecken und spannen
- Qualität: 12.9
- Schwarz beschichtet
- Siyah kaplama

1650

- 1650" slot plates it has the feature of making the coupling by
- 1650" slot plates it has the feature of making the coupling by
- Quality 12.9 to the top.
- Black Coating
- Black coating



Hinweis: Verwenden Sie die Marke Loctite

Produktcode 8150 auf dem Bolzengewinde
 Not: 150°C'ye kadar olan sıcaklıklarda
 währende Werkstück im Klammern
 sikma işlemi yapılırken dış ortamın üzerine
 Von 150 °C'ye kadar olan sıcaklıklarda
 Loctite 8150 kullanılır.



Loctite
8150

Note: Use Loctite brand product code
 8150 on the bolt thread while clamping
 workpiece environment above 150 °C
 Loctite 8150 is used.